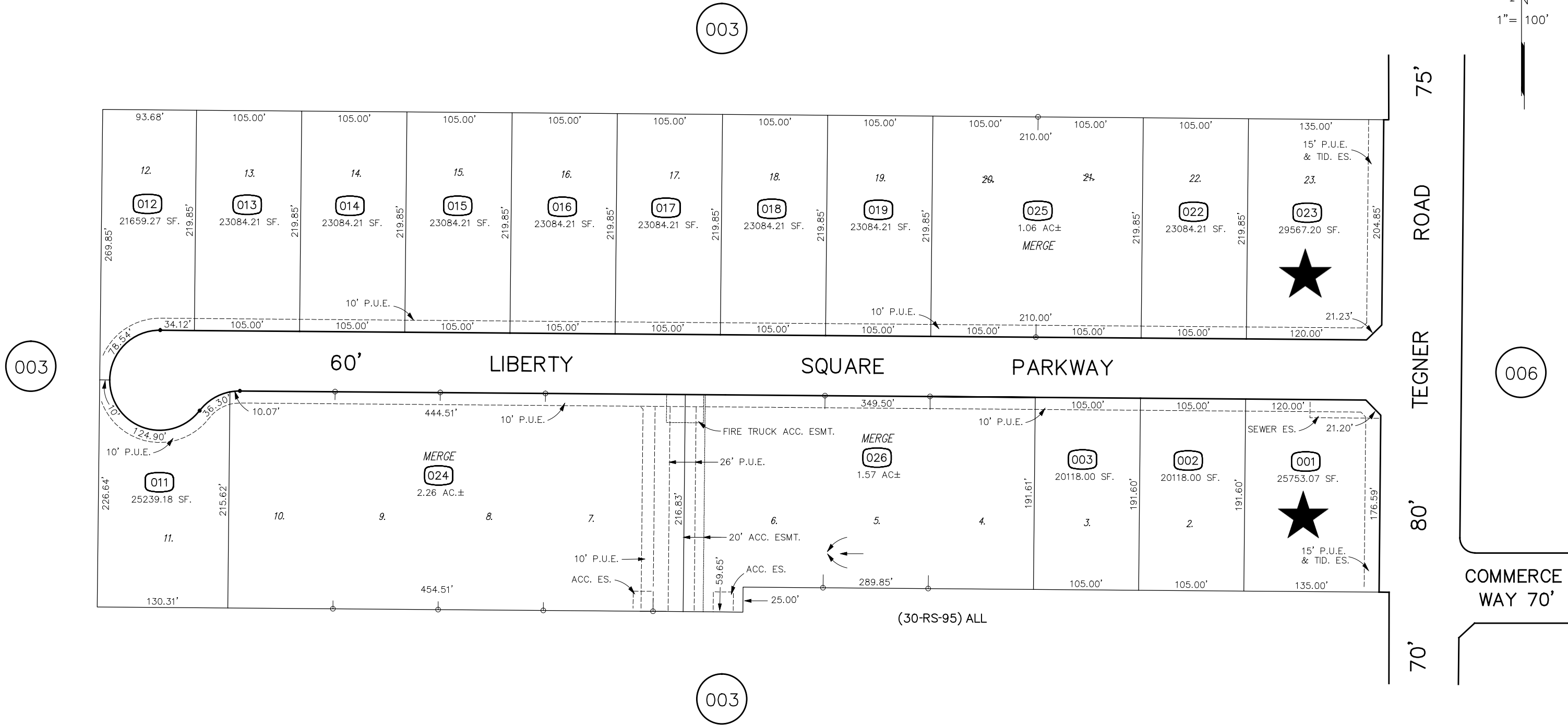
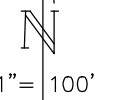


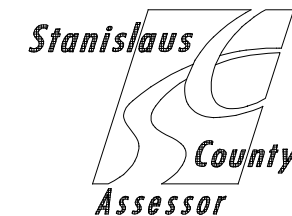
PORTION SE. 1/4 OF NE. 1/4 OF SECTION 20 T.5S. R.10E. M.D.B.& M.
LIBERTY INDUSTRIAL PARK (43M28)

007 122 044 - 066

THIS MAP FOR
ASSESSMENT PURPOSES ONLY



FROM: 044-003
DRAWN: 09-14-06 MB.
REVISED: 10-20-11 MB, 5-17-12 MF, 9-24-20 MF, 1-4-21 MF



07,12,13,21